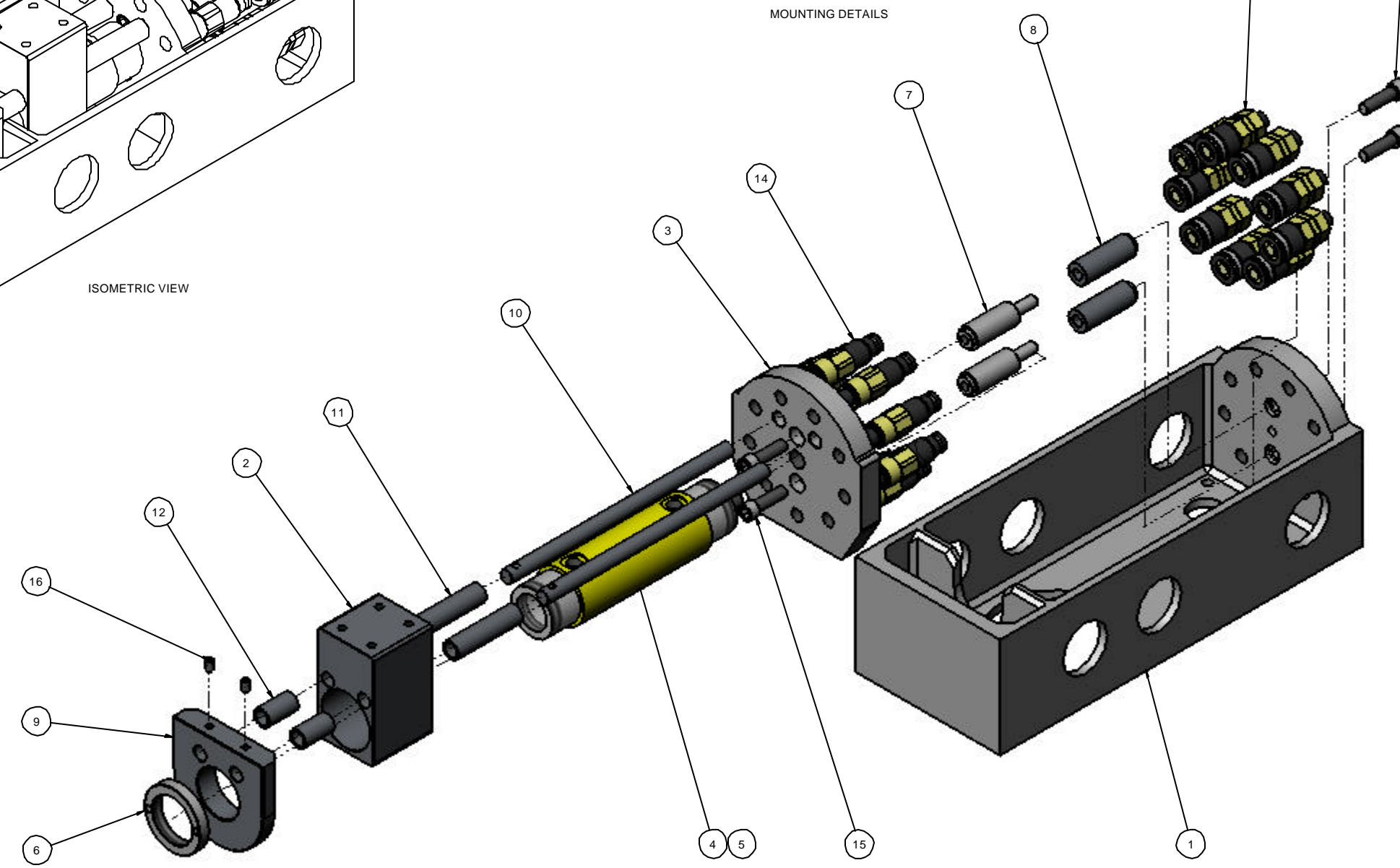


ITEM NO.	QTY	PART NO.
1	1	RWENU_004AUTO COUPLER BASE
2	1	RWENU_014CYLINDER MOUNTING BLOCK
3	1	RWENU_003AUTO COUPLER SLIDING PLATEN
4	1	STD028 BRD-93 BODY
5	1	STD029 BRD-93 PLUNGER
6	1	RWENU_012BRD-93 RETAINER NUT
7	2	RWENU_010 MALE ALIGNMENT PEG
8	2	RWENU_009 FEMALE ALIGNMENT PEG
9	1	RWENU_011BRD-93 LOCATION COLLAR
10	2	RWENU_013SLIDING PLATEN ALIGNMENT PIN
11	2	RWENU_015FRONT ALIGNMENT PIN SLEEVE
12	2	RWENU_016REAR ALIGNMENT PIN SLEEVE
13	9	RWENU_006 FEMALE COUPLER cw STUD & DOWTY
14	1	STD032 38 DOWTY WASHER
15	1	STD033 .38 BSP THREADED NIPPLE
16	1	RWENU_002HOLMBURY F_A9_38 BSP FBCD
17	9	RWENU_005MALE COUPLER cw STUD & DOWTY
18	1	HOLMBURY M APM9 0375 BSP K05 MALE HALF COUPLER
19	1	STD033 .38 BSP THREADED NIPPLE
20	1	STD032 38 DOWTY WASHER
21	4	STD030 M12 X 40 SOKET HD SET SCREW
22	2	STD031M8 x 15 SCKT SET SCREW

NOTES:
 1 - APPROXIMATE MASS = 50KG.
 2 - MATERIAL = 304L & 316 STAINLESS STEEL (FABRICATED PARTS ONLY)



REV. NO.	DATE	REV. NO.	DATE	REV. NO.	DATE	REV. NO.	DATE	REV. NO.	DATE

NOTE: REV. "A" MODNOTE: DESCRIPTION: FIRST RELEASE	HI-PRESS HYDRAULICS LTD UNIT 2, HALL HOUSE INDUSTRIAL ESTATE, NEW HUTTON, KENDAL, CUMBERLAND, LA9 0JH Tel: 01539 734005 Fax: 01539 734006 Email: cumbria@hi-press.co.uk Web: www.hi-press.co.uk	PROJECT: BNFL - SKIP HANDLER SYSTEM TITLE: AUTO COUPLER - 9 WAY
MATERIAL: SEE TEXT	FINISH: STANDARD	REVISION: A
WEIGHT(g): SEE TEXT	DRAWN: [Signature] DATE: [Date] CHECKED: [Signature] DATE: [Date] APPROVED: [Signature] DATE: [Date]	DWG NO.: RWENU_007 SHEET: A1